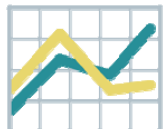




pennsylvania
DEPARTMENT OF PUBLIC WELFARE
OFFICE OF MENTAL HEALTH AND
SUBSTANCE ABUSE SERVICES

Reducing State Hospital Readmissions

The rate of readmissions for adults to a state mental hospital (SMH) is a core measure of the mental health service system's performance. Timely follow-up post discharge is vital to reducing readmissions. Pennsylvania is committed to developing and improving home and community based services to facilitate community living, thereby opening doors for those living with mental illness to attain and sustain recovery, build resilience, and live to their fullest potential.



How Are We Doing?

Pennsylvania's 2007 SMH readmission rates were far below the national averages of 9.8% (30 day readmissions) and 20.3% (180 day readmissions). Readmission rates are significantly lower for consumers discharged with a Community Support Plan (CSP).

"Readmission rates are significantly lower for consumers ... with a CSP."

Talking Points:

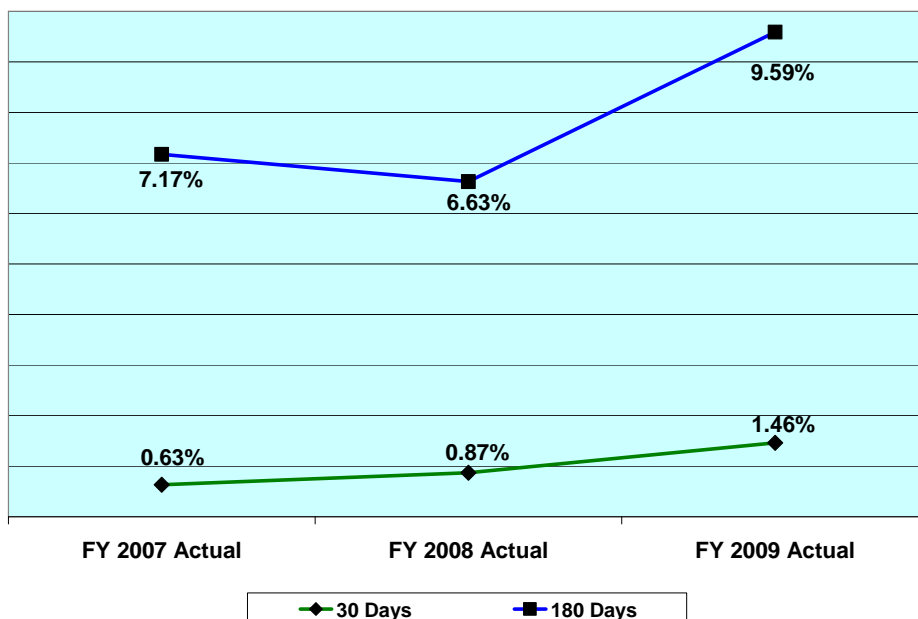
Since 1994, the **resident population** at Pennsylvania's state hospitals has **decreased** by nearly **65 percent**.

Since 1992, DPW has **transferred \$247M** that formerly supported state hospital beds to **community based programs**.

Assertive Community Treatment (**ACT**), **Peer Support** and Positive Practice Resource Teams (**PPRT**) **divert** state hospital readmission.

OMHSAS promotes **supportive housing initiatives** to decrease readmissions.

Rates of State Mental Hospital Readmissions:
Pennsylvania's Non-Forensic Adult Population



What Do the Findings Mean? Pennsylvania's rates of adult readmissions to state mental hospitals within 30 and 180 days of discharge have remained remarkably low. While there appears to be a data outlier in the FY 2009 rates, our analysis shows that this is a result of relatively few readmissions (small numbers) for which any slight increase in the number of readmissions translates into large percentage increases. OMHSAS continues to monitor readmissions. Projections of FY 2010 data show a leveling-off of the readmission rates.

What Did We Measure? Data was compiled using state hospital patient discharge and admission information contained within Pennsylvania's Patient Census Information System (PCIS). Readmission rates within 30 and 180 days of state hospital discharge are national performance indicators, and are a requirement of the Community Mental Health Services Block Grant.